



## MIDSTREAM

### New name, same Company.

On December 1, 2023, Holly Energy Partners, L.P. ("HEP") merged with, and is now, a wholly owned subsidiary of HF Sinclair Corporation and is headquartered in Dallas, Texas, doing business as HF Sinclair Midstream.

2323 Victory Ave., Suite #1400

Dallas, TX 75219

Phone: (877) 748-4464

Website: [www.hfsinclair.com/about-us](http://www.hfsinclair.com/about-us)

### ABOUT US - HEALTH, SAFETY AND THE ENVIRONMENT

HF Sinclair Midstream dedicates significant time, effort and resources to ensure our petroleum pipelines and terminals continue to operate safely. Ongoing efforts by our employees keep the operation of our pipelines, terminals, and other associated facilities operating efficiently and compliant under the guidance of federal, state, and local requirements.

To achieve the highest level of protection for the communities in which we operate and our employees, we focus our efforts on implementing industry standards and Best Practices in addition to compliance with applicable rules and regulations.

### SYSTEM INTEGRITY AND RELIABILITY

In an effort for HF Sinclair Midstream to successfully meet our goal of protecting communities, our people and the environment, we assess risks and identify actions to mitigate those risks to ensure the highest level of integrity and reliability for our pipelines. Our Integrity Management Programs guide us in preventing releases from our facilities and pipelines. This is achieved by determining those operations which could affect High Consequence Areas (HCA's) such as populated areas and areas that are sensitive to environmental issues. We inspect our pipelines regularly using technologically advanced inspection equipment. Our pipelines are monitored 24 hours a day

7 days a week by trained personnel in a central control center using advanced technology, communication and computer systems.

### 811 CALL BEFORE YOU DIG

HF Sinclair Midstream is a member of each State's One-Call system where we operate. This is a free service to inform underground utilities and pipeline owners of any planned excavation activities that could potentially affect our pipelines. We ensure the management of all One-Calls is done according State requirements and encourage the use of 8-1-1 to all excavators to promote safe digging practices.



### EMERGENCY PREPAREDNESS AND RESPONSE

To maintain preparedness to respond to an emergency, HF Sinclair Midstream maintains relationships with local emergency responders and public officials. Whenever operating conditions

### EMERGENCY CONTACT:

1-877-748-4464

#### PRODUCTS/ DOT GUIDEBOOK ID#/ GUIDE#:

Crude Oil	1267	128
Diesel	1202	128
Gasoline	1203	128
Isobutane	1075	115
Jet Fuel	1863	128
Kerosene	1223	128
LPG	1075	115
Naphtha	1268	128
Natural Gas	1971	115
Oil Gas	1071	119

### NEW MEXICO

#### COUNTIES OF OPERATION:

Chaves	Otero
Eddy	San Juan
Lea	Torrance

*Changes may occur. Contact the operator to discuss their pipeline systems and areas of operation.*

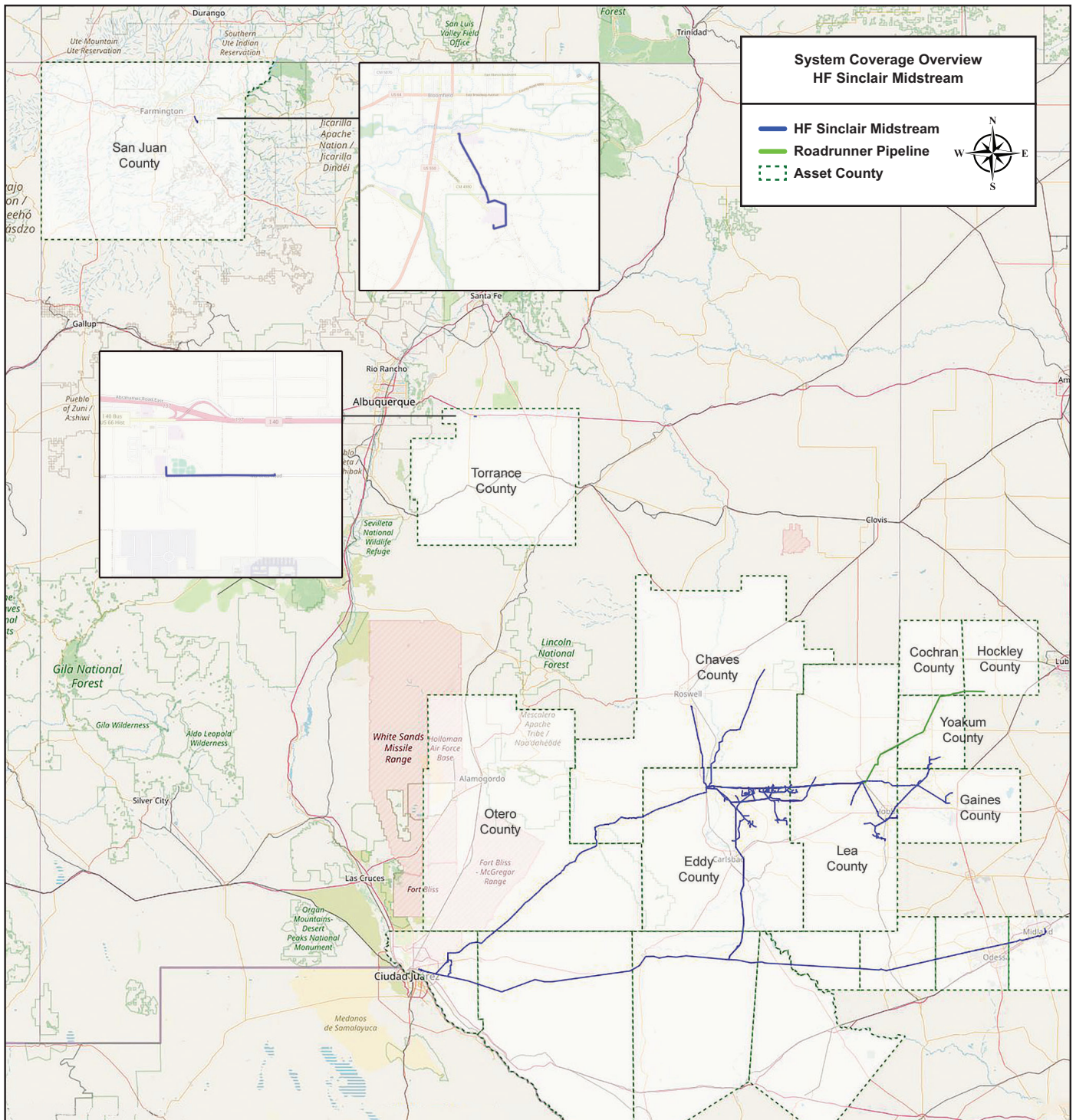
may change, we are alerted and the condition is investigated and we take appropriate action to ensure the pipeline is shutdown or isolated as necessary. In the event of an emergency, HF Sinclair Midstream personnel will take actions to minimize the impact of a release from the pipeline to people, property and the community.

### PRODUCTS TRANSPORTED IN YOUR AREA

PRODUCT	LEAK TYPE	VAPORS
HAZARDOUS LIQUIDS [SUCH AS: CRUDE OIL, DIESEL FUEL, JET FUEL, GASOLINE, AND OTHER REFINED PRODUCTS]	Liquid	Initially heavier than air and spread along ground and collect in low or confined areas. Vapors may travel to source of ignition and flash back. Explosion hazards indoors, outdoors or in sewers.
HEALTH HAZARDS	Inhalation or contact with material may irritate or burn skin and eyes. Fire may produce irritating, corrosive and/or toxic gases. Vapors may cause dizziness or suffocation. Runoff from fire control or dilution water may cause pollution.	
HIGHLY VOLATILE LIQUIDS [SUCH AS: BUTANE, PROPANE, ETHANE AND NATURAL GAS LIQUIDS (NGL)]	Gas	Initially heavier than air, spread along ground and may travel to source of ignition and flash back. Product is colorless, tasteless and odorless.
HEALTH HAZARDS	Will be easily ignited by heat, sparks or flames and will form explosive mixtures with air. Vapors may cause dizziness or asphyxiation without warning and may be toxic if inhaled at high concentrations. Contact with gas or liquefied gas may cause burns, severe injury and/or frostbite. Fire may produce irritating and/or toxic gases.	
NATURAL GAS	Gas	Lighter than air and will generally rise and dissipate. May gather in a confined space and travel to a source of ignition.
HEALTH HAZARDS	Will be easily ignited by heat, sparks or flames and will form explosive mixtures with air. Vapors may cause dizziness or asphyxiation without warning and may be toxic if inhaled at high concentrations. Contact with gas or liquefied gas may cause burns, severe injury and/or frostbite.	



# HF Sinclair Midstream



Base map courtesy of [openstreetmap.org](https://openstreetmap.org)